

---

## 5 Rates

---

We have shown how, by splitting the follow-up period into small enough bands, the importance of arbitrary assumptions about when the losses occur can be minimized. We now follow this argument to its logical conclusion and divide the follow-up into infinitely small time bands.

### 5.1 The probability rate

As the bands get shorter, the conditional probability that a subject fails during any one band gets smaller. When a band shrinks towards a single moment of time, the conditional probability of failure during the band shrinks towards zero, but the conditional probability of failure *per unit time* converges to a quantity called the *probability rate*. This quantity is sometimes called the *instantaneous* probability rate to emphasize the fact that it refers to a moment in time. Other names are *hazard rate* and *force of mortality*.

The probability rate refers to an *individual subject*. This is counterintuitive to many epidemiologists, who think of a rate as an empirical summary of the frequency of failures in a group observed over time. We show in the next section that such a summary is, in fact, the most likely value of the common probability rate for the subjects in the group. It is general practice in epidemiology to refer to both the probability rate and its estimated value as the rate, even though this leads to many logical absurdities. We have tried to keep as close as possible to this tradition, while avoiding the logical contradictions, by referring to the probability rate as the rate parameter and its estimated value as the observed rate.

### 5.2 Estimating the rate parameter

Even though the rate parameter refers to a single individual it is not possible to estimate its value from the experience of that individual. The estimate must be based on the experience of a group of subjects assumed to have the same rate. Similarly, even though the rate parameter refers to a single moment of time, its estimated value is usually based on a period of follow-up over which the rate is assumed to be constant. The estimated rate for this period then refers to the constant value which the rate parameter

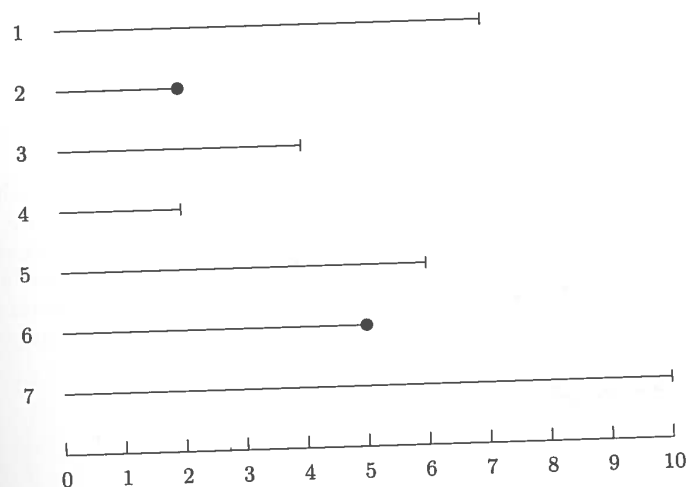


Fig. 5.1. The follow-up experience of 7 subjects.

takes at all time points during the period.

The rate parameter over a follow-up period is estimated by dividing the period into a number of small time bands of equal length and estimating the *common* probability of failure for each of the bands. This is divided by the length of a band to get the rate per unit time. The process is illustrated using the follow-up experience of the subjects shown in Fig. 5.1, in which the follow-up experience of the subjects is shown as lines which end when follow-up ends. The lines for those subjects who fail end with a ●, while those whose observation time is censored end with a short bar. The follow-up period has been divided into 10 short bands and for the present we shall assume that follow-up always stops at the end of a short band. From the figure we see that the follow-up of subject 1 stops after 7 bands due to censoring. For subject 6 the follow-up stops after 5 bands when the subject fails, and so on.

**Exercise 5.1.** How many observations of one subject through one time band are observed? How many of these ended in failure?

Assuming that the rate parameter is constant over the follow-up period, the conditional probability of failure is the same for all bands and its most likely value is  $2/36$ . The most likely value of the corresponding rate parameter is  $2/36$  divided by the length of the bands. Suppose for illustration that each band has length 0.05 years. The most likely value of the rate parameter is

then

$$\frac{2}{(36 \times 0.05)} = 1.11 \text{ per year.}$$

Note that  $36 \times 0.05$ , which equals 1.8 years, is the total observation time for the 7 subjects.

Now suppose that five times as many bands are used, so that each is 0.01 years in length. The most likely value of the probability of failure for these bands is  $2/180$ , but the most likely value of the corresponding rate stays the same because there are now 180 bands of length 0.01 years and  $180 \times 0.01$  is the same as  $36 \times 0.05$ , both being equal to the total observation time, added over subjects. In general, then, as the bands shrink to zero, the most likely value of the rate parameter is

$$\frac{\text{Total number of failures}}{\text{Total observation time}}$$

Note that assumption that events occur at the end of bands is automatically true when the bands shrink to zero. This mathematical device of dividing the time scale into shorter and shorter bands is used frequently in this book, and we have found it useful to introduce the term *clicks* to describe these very short time bands.

Time can be measured in any convenient units, so that a rate of 1.11 per year is the same as a rate of 11.1 per 10 years, and so on. The total observation time added over subjects is known in epidemiology as the *person-time* of observation and is most commonly expressed as person-years. Because of the way they are calculated, estimates of rates are often given the units *per person-year* or *per 1000 person-years*.

The use of the general formula for the estimated value of a rate is now illustrated using data from a computer simulation of 30 subjects who are liable to only one disease (the failure) and the follow-up is indefinitely long, so that eventually all subjects develop the disease. The only variable in the outcome is how long it takes for the disease to develop, and these times are shown in Table 5.1.

**Exercise 5.2.** Using the time interval from the start of the study to the moment when the last subject develops the disease, find the total observation time for the 30 subjects and hence estimate the rate for this interval. Give your answer per  $10^3$  person-years as well.

**Exercise 5.3.** The previous exercise is rather unrealistic. Real follow-up studies are of limited duration and not all of the subjects will fail during the study period. Estimate the rate from a study in which the same subjects are observed only for the first five years.

**Table 5.1.** Time until the disease develops, for 30 subjects

Subject	Years	Subject	Years
1	19.6	16	0.6
2	10.8	17	2.1
3	14.1	18	0.8
4	3.5	19	8.9
5	4.8	20	11.6
6	4.6	21	1.3
7	12.2	22	3.4
8	14.0	23	15.3
9	3.8	24	8.5
10	12.6	25	21.5
11	12.8	26	8.3
12	12.1	27	0.4
13	4.7	28	36.5
14	3.2	29	1.1
15	7.3	30	1.5

### 5.3 The likelihood for a rate

The argument of the last section, although leading to the most likely value of the rate parameter, does not allow us to explore the support for other values. In this section we shall obtain a formula for the likelihood for a rate parameter.

Consider a more general example in which  $D$  failures are observed for a total of  $N$  clicks of time, each of duration  $h$  years, where  $h$  is very small and  $N$  is very large. The total observation time in years is  $Y = Nh$ . Let  $\pi$  be the conditional probability of failure during a click. Then the likelihood for  $\pi$  is

$$(\pi)^D (1 - \pi)^{N-D}.$$

Let the corresponding rate parameter be  $\lambda$ , where, because  $h$  is small,

$$\lambda = \pi/h.$$

The likelihood for  $\lambda$  follows by replacing  $\pi$  by  $\lambda h$ , and is

$$(\lambda h)^D (1 - \lambda h)^{N-D}.$$

The log likelihood for  $\lambda$  is therefore

$$D \log(\lambda) + D \log(h) + (N - D) \log(1 - \lambda h).$$

To see what happens when time is truly continuous, consider the behaviour of this expression as the click duration,  $h$ , becomes progressively shorter. Since the total observation time  $Y$  remains unchanged it follows that the number of clicks,  $N$ , must become progressively larger. As  $h$  becomes smaller and  $N$  becomes larger, eventually  $N - D$  becomes nearly the same as  $N$ , and  $\lambda h$  becomes so small that

$$\log(1 - \lambda h) \approx -\lambda h.$$

(This property of the logarithmic function is discussed in Appendix A.) Making these substitutions, the log likelihood becomes

$$D \log(\lambda) + D \log(h) - N\lambda h.$$

The term  $D \log(h)$  does not depend on  $\lambda$  and is irrelevant since it cancels out in log likelihood ratios. Omitting this term and noting that  $Nh$  is the total observation time,  $Y$ , we obtain the following simplified expression for the log likelihood:

$$D \log(\lambda) - \lambda Y.$$

The corresponding likelihood,

$$(\lambda)^D \exp(-\lambda Y),$$

is called the *Poisson likelihood* after the French mathematician. As we would expect from the previous section it takes its maximum value when  $\lambda = D/Y$ .

To illustrate the use of this likelihood, suppose 7 cases are observed and the total observation time is 500 person-years. Then the log likelihood for  $\lambda$  is

$$7 \log(\lambda) - 500\lambda.$$

A graph of the log likelihood ratio versus  $\lambda$  is shown in Fig. 5.2. The maximum value of the log likelihood occurs at

$$\lambda = 7/500 = 0.014 \text{ per person-year.}$$

The supported range for  $\lambda$  may be found from the graph by reading off the values of  $\lambda$  at which the log likelihood ratio has reduced to  $-1.353$ . In this case the graph shows that the supported range for  $\lambda$  is from  $7.0 \times 10^{-3}$  to  $24.6 \times 10^{-3}$  per person-year.

**Exercise 5.4.** Calculate the value of the log likelihood at  $\lambda = 0.01$ ,  $\lambda = 0.014$ , and  $\lambda = 0.02$ . Using the fact that the log likelihood is at its maximum when  $\lambda = 0.014$  calculate the log likelihood ratio for  $\lambda = 0.01$  and  $\lambda = 0.02$ .

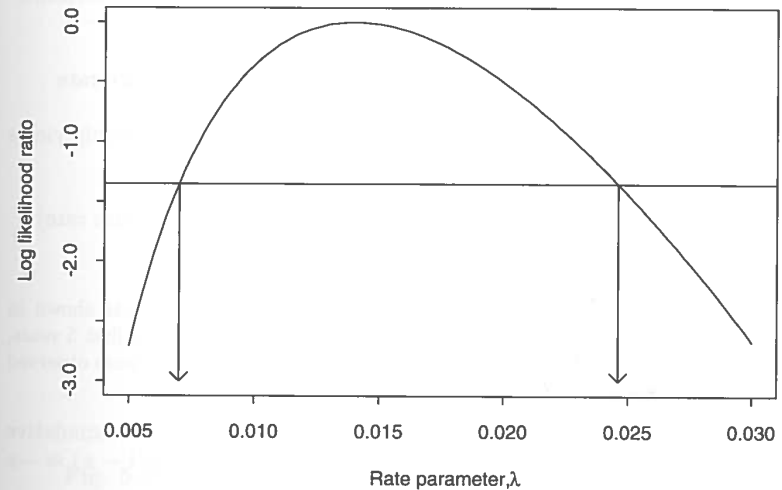


Fig. 5.2. Log likelihood ratio for  $\lambda$ .

If we wish to estimate the rate over a restricted period of observation the argument requires only trivial modification; only the person-clicks falling in the period of interest contribute information so that  $D$  and  $Y$  refer to the number of events and the observation time which occur within the period.

#### 5.4 Cumulative survival probability in terms of the rate

Suppose a subject experiences a constant rate  $\lambda$  with no possibility of loss during the follow-up. The cumulative probability that he or she will survive a given period of time,  $T$ , may be found from  $\lambda$  by dividing the period into  $N$  clicks, each of length  $h$ , so that  $T = Nh$ . The conditional probability of failure at each click is  $\lambda h$ , so that the probability of surviving  $N$  such clicks is

$$(1 - \lambda h)^N.$$

The log of this cumulative survival probability is

$$N \log(1 - \lambda h)$$

and since  $\log(1 - \lambda h)$  may be replaced by  $-\lambda h$  when  $h$  is small this becomes

$$-\lambda N h = -\lambda T.$$

The quantity  $\lambda T$  is called the *cumulative failure rate*. With this terminology we have the fundamental result that

$$\log(\text{Cumulative survival probability}) = -\text{Cumulative failure rate}$$

Applying the antilog function,  $\exp()$ , to both sides of this relationship yields the alternative form:

$$\begin{aligned} \text{Cumulative survival probability} &= \exp(-\text{Cumulative failure rate}) \\ &= \exp(-\lambda T). \end{aligned}$$

**Exercise 5.5.** Using your estimate of the rate for the 30 subjects shown in Table 5.1 (Exercise 5.2), calculate the probability of survival for the first 5 years, and hence the 5-year risk. Compare this with the proportion of subjects observed to fail in this period (see Exercise 5.3).

An important special case concerns *rare events*, in which the cumulative survival is large and the cumulative risk is small. Since  $\log(1 - x) \approx -x$  when  $x$  is small,

$$\begin{aligned} \log(\text{Cumulative survival probability}) &= \log(1 - \text{Cumulative risk}) \\ &\approx -\text{Cumulative risk}, \end{aligned}$$

so the cumulative risk and the cumulative failure rate are approximately equal for rare events.

### 5.5 Rates that vary with time

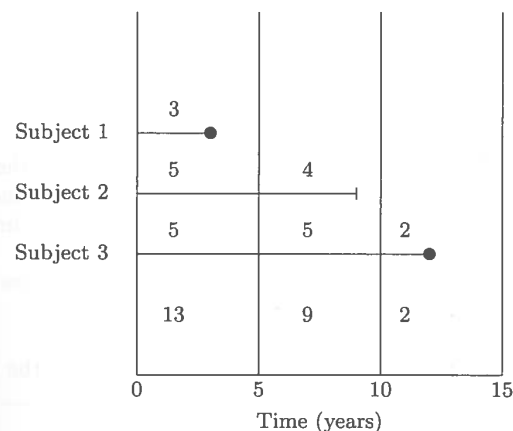
We have assumed that the rate parameter is constant over the follow-up period and this may be unrealistic over an extended follow-up. However, provided the rate parameter is not changing too quickly, the follow-up period can be divided into broad bands during which the rate can be assumed to be constant. This implies abrupt changes in the rate parameter from one band to the next, but even such a crude model proves useful in practice provided the changes are not too large.

Consider the first band and let  $D^1$  be the number of failures  $Y^1$  the total observation time and  $\lambda^1$  the rate parameter. The log likelihood for  $\lambda^1$  is

$$D^1 \log(\lambda^1) - \lambda^1 Y^1$$

and similarly for further bands. Thus once failures and total observation time have been partitioned between the time bands estimation of band-specific rates proceeds as before.

**Exercise 5.6.** Fig. 5.3 illustrates observation of three subjects across three time bands, showing the observation time (years) for each subject in each band. What are the estimated failure rates for each of the bands?



**Fig. 5.3.** Survival of three subjects across three time bands.

The relationship between the cumulative survival probability over several bands and the band-specific rates is also a simple generalization of our earlier result. For a time interval which has been divided into three bands of length  $T^1$ ,  $T^2$ , and  $T^3$ , during which the rates are  $\lambda^1$ ,  $\lambda^2$ , and  $\lambda^3$ , the log survival probabilities for each band are  $-\lambda^1 T^1$ ,  $-\lambda^2 T^2$ , and  $-\lambda^3 T^3$  respectively. The log of the cumulative survival probability over all three bands is therefore the sum of these, namely

$$-\lambda^1 T^1 - \lambda^2 T^2 - \lambda^3 T^3 = -(\lambda^1 T^1 + \lambda^2 T^2 + \lambda^3 T^3).$$

The quantity  $(\lambda^1 T^1 + \lambda^2 T^2 + \lambda^3 T^3)$  is the cumulative failure rate over the whole interval. It follows that the relationship

$$\log(\text{Cumulative survival probability}) = -\text{Cumulative failure rate}$$

still holds when the rate varies from one band to the next.

The use of this relationship to calculate survival probabilities will be demonstrated using the data for the survival of women diagnosed with stage I cancer of the cervix, shown in Chapter 4. The time bands are one year in length and we shall assume that the rate is constant within a time band, but can vary between time bands. Since exact times of failure and loss are not given we shall assume that, on average, each failure contributes 0.5 years to the observation time in the band in which the failure takes place, and similarly for losses. The total observation time during any particular year of follow-up is then approximately

$$Y \approx (N - D - L) \times 1 + D \times 0.5 + L \times 0.5 \\ = N - 0.5D - 0.5L,$$

where  $N$  is the number alive at the start of the year,  $D$  is the number of deaths, and  $L$  is the number of losses during the year. For the first band  $N = 110$ ,  $L = 5$ , and  $D = 5$ , so the observation time for the first year is

$$Y^1 \approx (110 - 0.5 \times 5 - 0.5 \times 5) = 105 \text{ woman-years}$$

and the estimated rate is  $5/105 = 0.0476$ .

For the second band  $N = 100$ ,  $L = 7$ , and  $D = 7$ , so the observation time for the second year is

$$Y^2 \approx (100 - 0.5 \times 7 - 0.5 \times 7) = 93 \text{ woman-years}$$

and the estimated rate is  $7/93 = 0.0753$ .

**Exercise 5.7.** Estimate the failure rate for stage I subjects during the third year.

The estimated cumulative failure rates for each year of the follow-up are shown in Table 5.2. The column headed 'cumulative survival probability' is obtained using the relationship

$$\text{Cumulative survival probability} = \exp(-\text{Cumulative failure rate}).$$

A life table constructed in this way is sometimes referred to as a *modified life table*.

**Exercise 5.8.** Calculate the cumulative rate over the last five years only, and hence the probability that a woman survives for ten years *given* that she has survived the first five.

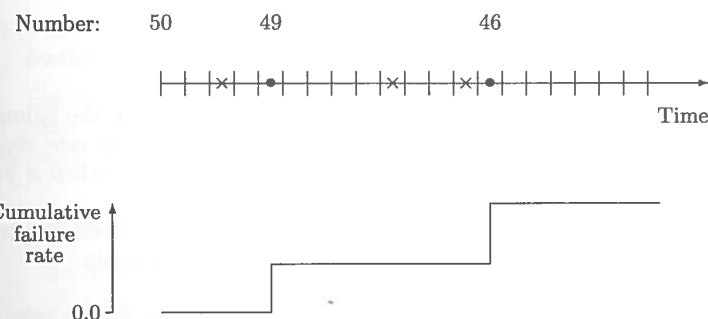
### ★ 5.6 Rates varying continuously in time

The assumption that the rate parameter is constant over broad bands of time, but changes abruptly from one band to the next, is widely used, but an alternative model, useful when exact times of failure and censoring are known, is to allow the rate parameter to vary from click to click. In Chapter 4 this kind of model led to the Kaplan–Meier estimate of the survival curve; when using rates it leads to the estimate known as the *Aalen–Nelson estimate*.

Fig. 5.4 shows the data that were used to describe the Kaplan–Meier estimate in Chapter 4, but the stepped graph now refers to the cumulative

**Table 5.2.** Modified life table for stage I women

Year	Rate	Cumulative rate	Cumulative survival probability
1	0.0476	0.0476	0.9535
2	0.0753	0.1229	0.8844
3	0.0886	0.2115	0.8094
4	0.0451	0.2566	0.7737
5	0.0000	0.2566	0.7737
6	0.0417	0.2983	0.7421
7	0.0800	0.3783	0.6850
8	0.0000	0.3783	0.6850
9	0.0000	0.3783	0.6850
10	0.0513	0.4296	0.6508



**Fig. 5.4.** Early follow-up of 50 subjects: the Aalen–Nelson estimate.

failure rate, not the cumulative survival probability. During the first of these clicks the estimated rate is  $0/(50h)$ . Similarly for all clicks which contain no failure the estimated rate is zero, so there is no addition to the cumulative rate at any of these points in time. The cumulative rate graph therefore remains horizontal during these clicks. For a click which contains a failure the rate is  $1/(Nh)$ , where  $N$  is the number in the study just before the click. Because this rate operates for a click of length  $h$ , the estimate of the cumulative rate increases by

$$\frac{1}{Nh} \times h = \frac{1}{N}.$$

Because the click can be thought of as being instantaneous, the cumulative

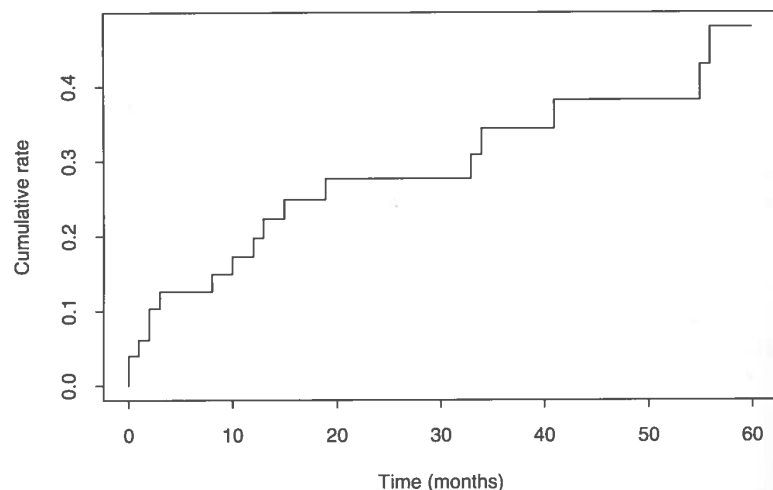


Fig. 5.5. Cumulative rate using the Aalen–Nelson method.

rate jumps by this amount at the moment of occurrence of the failure. In our example, the first jump is of size  $1/49$ ; the cumulative rate stays at this value until the click which contains the second failure when it jumps by a further  $1/46$ , and so on.

The cumulative failure rate estimate may also be expressed as a cumulative survival probability, using the now familiar relationship

$$\text{Cumulative survival probability} = \exp(-\text{Cumulative failure rate}).$$

When this is done, the Aalen–Nelson estimate of the relationship of the cumulative survival probability with time looks very similar to the Kaplan–Meier estimate. Both have a stepped shape with steps at the times when failures occur. For most of the follow-up period, the two estimates are very close because of the approximate relationships,

$$\begin{aligned}\log(1 - 1/N) &\approx -1/N \\ \exp(-1/N) &\approx 1 - 1/N\end{aligned}$$

for large  $N$ . At the end of the interval  $N$  is sometimes small and the two estimates may differ somewhat.

For reasons to be discussed in Chapter 7, it may be best to plot the cumulative failure rate and not the survival probability, even though the former is a little harder to interpret. One fairly clear message from the plot of cumulative failure rate is how the failure rate varies with time. If

the failure rate is constant then the cumulative rate will rise linearly with time; if the rate is increasing the cumulative rate will rise non-linearly, showing an increase in gradient with time; if the rate decreases with time the cumulative rate will still rise, but now it will show a decrease in gradient with time.

The Aalen–Nelson plot of the cumulative rate for the melanoma data, introduced in Chapter 4, is shown in Fig. 5.5. This plot shows that the rate is higher during the first 20 months than during the period from 20 to 60 months.

**Exercise 5.9.** Use the plot in Fig. 5.5 to obtain a rough estimate of the rate during the first 20 months and during the period from 20 to 60 months

### Solutions to the exercises

5.1 The total number of subjects observed through one band is

$$7 + 2 + 4 + 2 + 6 + 5 + 10 = 36,$$

and 2 of these end in failure.

5.2 The total observation time for the 30 subjects is  $140.1 + 121.8 = 261.9$  years. The rate is  $30/261.9 = 0.1145$  per year, or  $114.5$  per  $10^3$  person-years.

5.3 The total observation time is now

$$5 + 5 + 5 + 3.5 + 4.8 + 4.6 + 5 + \dots + 1.5 = 115.8 \text{ years.}$$

The total number of failures is 14 so the rate is  $14/115.8 = 0.1209$  per year, or  $120.9$  per  $10^3$  person-years.

5.4 The log likelihood at  $\lambda = 0.01$  is

$$7 \log(0.01) - 500 \times 0.01 = -37.236.$$

Similarly the log likelihoods at  $\lambda = 0.014$  and  $\lambda = 0.02$  are  $-36.881$  and  $-37.384$ . The log likelihood ratio at  $\lambda = 0.01$  is

$$(-37.236) - (-36.881) = -0.3550.$$

Similarly the log likelihood ratio at  $\lambda = 0.02$  is  $-0.5032$ .

5.5 When the rate is  $0.1145$  per year, the probability of surviving for 5 years is

$$\exp(-0.11452 \times 5) = 0.564$$

## 5 Rates

### 5.1 The probability rate (hazard rate)

JH is not sure why the authors used the term *probability rate*, when the term *hazard rate*<sup>1</sup>, or short-term incidence density, or even just *rate*, or *instantaneous rate*, would have done. The only virtue JH sees for this term is that – unlike the term hazard rate – it is somewhat *explanatory*: the term does indeed convey, and help you remember, the idea that it is the **probability per unit time**. JH has seen many people struggle to remember and accurately reproduce the definition of the hazard rate. The one item that is not conveyed directly by any of these terms is the **conditional** nature of the probability: it has as its denominator the person time (‘experience’) lived by those who reached the “*t*” that marks the beginning of the small interval/band in question.

*Another way to think of it is as the limit, as the width of the time band is shrunk to zero, of the incidence density (ID).*

It is important to note that the *hazard rate* (or ‘incidence density’ or ‘probability rate’) **has an inverse-time dimension**. See Table 1 in the ‘Incidence to Risk’ teaching article.

Since every realistic and epidemiologically interesting time interval has a non-zero width, and since in any case we usually use the hazard rate as a smooth function of time, the idea of it as an instantaneous rate is merely a mathematical nicety. Indeed, we would immediately multiply this rate into some amount of person time PT (which we can depict as a rectangle with height P persons and width T time units) to get an expected number of events, or for the individual, the conditional probability<sup>2</sup>. The point is that if we were to

<sup>1</sup>The Website <http://www.jeff560.tripod.com/h.html> “Earliest Known Uses of Some of the Words of Mathematics” tells us: HAZARD RATE came into use in statistics in the 1960s as a general term for what is called the force of mortality in demography and the intensity function in extreme value theory. David (2001) finds “hazard rate” in R. E. Barlow; A. W. Marshall & F. Proschan “Properties of Probability Distributions with Monotone Hazard Rate,” *Annals of Mathematical Statistics*, 34, (1963), 375-389. A JSTOR search found “death-hazard rate” in D. J. Davis “An Analysis of Some Failure Data,” *Journal of the American Statistical Association*, 47, (1952), 113-150.

See also our article [Cultural imagery and statistical models of the force of mortality: Addison, Gompertz and Pearson giving some of the history of the hazard function and the force of mortality](#). Further details can be found in this [this presentation](#) we gave on the topic.

<sup>2</sup>Freedman, in his very good orientational article, [Survival Analysis: A Primer](#) in the *American Statistician* in May 2008, puts it well: “**The intuition behind the formula is that  $h(t)dt$  represents the conditional probability of failing in the interval  $(t, t + dt)$ , given survival until time  $t$ .**”

reverse the process from the expected number of events in a certain PT, the ratio of no. of events to PT would remain the same as we shrunk the width of this time slice, and the corresponding number of events. If it did not, it would imply that the intensity is changing quickly over time, and that a single average intensity (or the corresponding conditional probability) is misleading. See Figure 1 and Table 1 in the teaching article on going from incidence function to cumulative incidence (a.k.a. ‘risk’) and back – JH divides the time on each side of a specific *t* into slices a year, a month, a week and a day wide, and yet the incidence density does not change.

In fact, the force of human mortality is – after a certain age – a monotonically increasing function of attained age (note the conditioning on attained age) but practically speaking, the values of the hazard function at age 32.564 and at 32.565 (or indeed over the age range 32 to 33) are similar enough that we can quite closely approximate this monotonically increasing hazard function (force of mortality) in this age band as a constant, and over a larger age range as piecewise constant within each 1-year age band. If we were concerned with the shape of the hazard function after an attained age or 104, we might want to make the time bands narrower, since the hazard function is ‘moving fast’ at that age. And at age 32, we might want to make them a bit wider than 1 year: see the value of the *q* function in the [1-year Canadian lifetables](#), where *q* is the conditional failure probability for age bands 1 year wide (*h*=1 in the terminology of section 5.3).

For males and females separately, the 22 [conditional] probabilities of dying within the (1, 4 or 5 year) age intervals are shown in Table 3.9 on p. 83 of this [Institut de la statistique du Quebec report](#) based on data from 2016-2018. They can be found in the *q<sub>x</sub>* column [ *x*: age; *q<sub>x</sub>* : given survival to birthday *x*, probability of dying between birthday *x* and birthday *x*+*a*, where *a* = 1, 4 et 5.]

*“The probability rate refers to an individual subject. This is counterintuitive to many epidemiologists.”*

This is also counterintuitive to JH, who doesn’t understand where these authors are coming from on this. An incidence density is certainly not about an individual person<sup>3</sup>. How are we to think of a failure rate of 8 ruptures per 10000-pipe-kilometer-years of operating pipeline of a water distribution system?

<sup>3</sup>There is, to some epidemiologists, a difference between the value for the collective, and the value for the individual. British medical statistician William Farr (1807-1883) and McGill epidemiologist Olli Miettinen (1936-) both take what we now think of as the ‘cumulative incidence’ proportion to refer to an empirical or theoretical value for a *collective*, whereas when an *individual* uses that value as his/her own probability, it should be called a *risk*.



The authors however do well to ask us to distinguish between the definition of the *parameter*, and an *estimate* (or estimator) of the value of this parameter in a particular context (e.g. the rupture rate when the temperature is in the vicinity of -20C.

Mathematically, then, here are a few definitions of what they call the probability rate, or simply the instantaneous rate, at time  $t$ . Since it is a parameter, we will, as they do, give it the Greek letter lambda,  $\lambda$ . With  $P$  the number of persons at risk at  $t$ , or more realistically, the average number of persons at risk over the entire interval  $(t, t + \delta t)$ ,

$$\lambda(t) = \lim_{\delta t \rightarrow 0} \frac{\text{Expected no. of events}}{P \times \delta t}$$

One can re-write this as

$$\lambda(t) = \lim_{\delta t \rightarrow 0} \frac{\text{Expected no. of events}}{P} \div \delta t$$

so that the Expected no. of events/*Person* looks somewhat like a probability. This probability, when divided by  $\delta t$  becomes the (conditional) failure probability *per unit time* that the authors use as their definition.

One will also see in survival analysis textbooks the definition of  $\lambda(t)$  or  $h(t)$  as

$$h(t) = \lambda(t) = f(t)/S(t),$$

where  $S(t)$  is the ‘survival’ function, i.e.,  $1 - F(t)$ , and  $f(t)$  the probability density function, of the ‘time to event’ random variable. This is no different from the definition above, since we can write it as

$$h(t) = \lambda(t) = \frac{f(t)\delta t}{S(t)} \div \delta t.$$

$S(t)$  is the proportion of persons who are at risk (event-free) at time  $t$ , and  $f(t)\delta t$  is the (unconditional) fraction of events that occur within the interval  $(t, t + \delta t)$ , so  $\frac{f(t)\delta t}{S(t)}$  is itself a (conditional) fraction of a fraction.

Moreover, we can rewrite the definition as

$$h(t)dt = \lambda(t)dt = \frac{-S'(t)dt}{S(t)}$$

and integrate both sides over the interval  $(0, T)$  to get

$$\int_0^T h(t)dt = \int_0^T \lambda(t)dt = \int_0^T \frac{-S'(t)}{S(t)} = -\log S(T).$$

Then, exponentiating both sides, we get the **fundamental relationship between the incidence density function (alias hazard function ( $h(t)$ ), or the maybe more familiar term ‘failure rate function’,  $\lambda(t)$ ) and the complement of cumulative incidence (CI)<sup>4</sup>**, namely

$$1 - CI_{0 \rightarrow T} = S(T) = \exp \left[ - \int_0^T h(t)dt \right] = \exp \left[ - \int_0^T \lambda(t)dt \right].$$

Notice also the (welcomed) use throughout the book of  $\lambda$  as an *event rate*, and **NOT** – as some books use it – **as the expected number of events**, i.e. as the mean parameter of a Poisson distribution. JH has tried to **be consistent in using the Greek letter  $\mu$  for the expected number of events**, since after all it is the mean or expected value of the random variable, and since it is important to keep the distinction between the numerator and denominator of an event rate parameter.

## 5.2 Estimating *the* probability rate parameter

Notice the use of the word *the*, i.e., that the parameter value is assumed constant in the follow-up period of interest.

## 5.3 The likelihood for a rate parameter

You might find it strange that the authors don’t go directly to the representation of the observed rate as an observed Poisson numerator divided by a known PT denominator. I think they did this to emphasize the idea of subdividing the PT into person-clicks.

It is interesting that in 1907 Gosset (of Student- $t$  fame) derived the Poisson distribution ‘from scratch’ using this same conceptual subdivision of a plate (or field in a microscope) into a large number of small squares, small enough that only one yeast cell would fit in it (C&H in section 4.4 write of time bands

<sup>4</sup>Ways to ‘see’ this relationship in heuristic terms are described in part II of the draft teaching article. JH has been searching a long time for who might have been the first to derive this relationship: as JH notes in the article, Chiang says that the equation

has been known to students of the lifetable for more than two hundred years. Unfortunately, it has not received much attention from investigators in statistics, although various forms of this equation have appeared in diverse areas of research.

As of October 2012, JH believes that Chiang was probably referring to a paper by Daniel Bernoulli published in 1766, where he calculates the gain in life expectancy after elimination of this cause of death (smallpox). His solution to that more complex problem involves the solution of the same differential equation we discuss above. See website for more details.



so narrow that “each failure occupies a band by itself”<sup>5</sup> If the mean number of cells per plate was  $\mu$  and the area of the plate was  $A$ , or  $N = A/a$  small squares of area  $a$  each, then the probability  $\pi$  that a small square contains a square is  $\pi = \mu/N$ . The probability that the total area  $A$  will contain  $y$  yeast cells is then

$$Pr(y \text{ occupied cells}) = {}^N C_y \pi^y (1 - \pi)^{N-y}.$$

Gosset used Stirling’s approximation, and the definition of  $e^x = \exp[x]$  as a limit, to go from this binomial probability to the Poisson probability  $\exp[-\mu] \mu^y / y!$

See the webpages devoted to [Gosset’s](#) and [Rutherford, Geiger and Bateman’s](#) groundbreaking articles – in 1907 and 1910 respectively – on ‘**counting statistics.**’ See also the derivation by Erlang, described in this [draft manuscript](#).

If we worked with  $\mu$  directly, then (ignoring the factorial, which doesn’t involve this parameter), the likelihood based on an observed count of  $D$  is

$$\exp[-\mu] \mu^D.$$

Substituting  $\mu = \lambda Y$ , where  $Y$  is C&H’s notation for amount of person-Years (what we call the denominator) gives

$$\exp[-\lambda Y] (\lambda Y)^D,$$

or, ignoring items that do not involve  $\lambda$ , as

$$\exp[-\lambda Y] (\lambda)^D,$$

so that the log-likelihood is indeed

$$-\lambda Y + D \log (\lambda),$$

It is interesting to go back to the derivation (section 81, pp. 205-206) by Poisson in his 1837 book *Probabilité des jugements en matière criminelle et en matière civile, précédées des règles générales du calcul des probabilités* (Paris, France: Bachelier, 1837). You can read the original via the Wikipedia link [http://en.wikipedia.org/wiki/Poisson\\_distribution](http://en.wikipedia.org/wiki/Poisson_distribution). Poisson also starts with the binomial, and goes to “*le cas où l’une des deux chances p et q est très petite.*”

<sup>5</sup>JH has put this very readable 1907 article <http://www.epi.mcgill.ca/hanley/c634/Rates/HaemacytometerStudentBka1907.pdf> under the resources for rates in course EPI634

### 5.3.1 Example: Likelihood for the (rate) parameter of exponentially distributed random variable, with interval censoring.

The Uganda and Kenya ‘circumcision in the prevention of HIV’ studies are examples of interval-censored (as well as the usual right-censored) data, since one cannot know exactly when a person became HIV+, only that it occurred in the interval between the last negative test and the first positive one.

Before setting up the likelihood for such data, let us consider a simple statistical model for the data, and let us focus for now on the control group. We will assume that the sero-conversion rate  $\lambda$  is constant over the 2 years, i.e., that  $\lambda(t) = \lambda$  over that interval. Up until now, we treated the number of events in the ‘aggregated-across-subjects’ person time as a Poisson random variable. Another way to look at this is to consider the inter-event times, (or the time-to-event times) and their distribution. We know from BIOS601 that if the event rate is  $\lambda$ , and there is always one unit at risk, then the inter-event times have an exponential distribution with mean  $1/\lambda$ . Thus, we can say that the ‘time-to-event’ for each subject is a realization of an exponential random variable with mean or expected value  $1/\lambda$ . If we call this r.v. ‘ $T$ ’, then

$$T \sim \exp(\mu_T = 1/\lambda),$$

$$S_T(t) = \exp[-\lambda t],$$

$$F_T(t) = 1 - S_T(t) = 1 - \exp[-\lambda t],$$

$$f_T(t) = F'_T(t) = \lambda \exp[-\lambda t] = (1/\mu_T) \exp[-(1/\mu_T)t].$$

In the control group in the **Uganda** trial, 2319 initially HIV- men were tested at the 6-month, or 0.5-year follow-up, and 19 of them were found to be HIV+, and the remaining 2300 were found to be HIV-.

The likelihood, based just on this first follow-up test is therefore (proportional to) the probability (as a function of the seroconversion rate  $\lambda$ ) of observing this pattern of results. First we write it as a product of 2319 probabilities:

$$Likelihood = \prod_{i=1}^{i=2319} Pr[\text{obs'd outcome for subject } i] = \prod_{i=1}^{i=19} Pr_i \prod_{i=20}^{i=2319} Pr_i$$

With  $T$  denoting the r.v. ‘time to HIV+’, each  $Pr_i$  in the second product is of the form  $Pr[T > 0.5 | \lambda] = \exp[-0.5\lambda]$ , while each  $Pr_i$  in the first product is of the form  $Pr[T < 0.5 | \lambda] = 1 - \exp[-0.5\lambda]$ . The likelihood based on this first test can thus be simplified to

$$L_{1st \text{ test}} = \exp[-2300 \times 0.5\lambda] \times (1 - \exp[-0.5\lambda])^{19}$$

Some 2229 of those HIV- at 6-months were tested at the 12-month, or 1-year follow-up, and 14 of them were found to be HIV+, and the remaining 2215 were found to be HIV-. Thus the likelihood based on this second test can thus be simplified to

$$L_{2nd\ test} = \exp[-2215 \times 0.5\lambda] \times (1 - \exp[-0.5\lambda])^{14}$$

Notice that with this exponential distribution, the fact that these 2229 had got through the first interval HIV-free has nothing to do with their (now conditional) probabilities for the next 6 months. Technically, we call this the “memoryless” property of the exponential distribution.<sup>6</sup> Thus,  $Pr[T > t | T > t_{given}] = Pr[T > t - t_{given}]$ , and so, whereas we would normally have to use the *conditional* probability  $\{F(1.0) - F(0.6)\}/S(0.5)$ , here we can use the unconditional probability of escaping infection for 6 months. In effect, we can ‘reset the clock to zero at  $T=0.5$ ,’ and imagine it was just like back at  $T = 0$ .

Some 980 of those HIV- at 12-months were tested at the 24-month, or 2-year follow-up, and 12 of them were found to be HIV+, and the remaining 968 were found to be HIV-. The likelihood based on this third test can thus be simplified to

$$L_{3rd\ test} = \exp[-968 \times 1.0\lambda] \times (1 - \exp[-1.0\lambda])^{12}$$

Thus the likelihood based on all three tests is

$$L_{all\ 3\ tests} = L_{1st\ test} \times L_{2nd\ test} \times L_{3rd\ test}$$

ie

$$L = \exp[-(2300 \times 0.5 + 2215 \times 0.5 + 968 \times 1.0)\lambda] \times (1 - \exp[-0.5\lambda])^{19} \times (1 - \exp[-0.5\lambda])^{14} \times (1 - \exp[-1.0\lambda])^{12}$$

<sup>6</sup>In industrial life-testing, this property is referred to as the ‘used is the same as new’ property. In failure time distributions where the failure is a function of age or duration of use (e.g. a computer or hard disk), the hazard is — maybe after a certain run-in period — an increasing function of its age or accumulated hours of work, and so the testers say ‘older is worse (less ‘reliable’) than newer;’ initially, before those units doomed to early failure have been weeded out, it may be that ‘newer is worse than older.’ Sadly, most human hazards, other than being struck by a meteor, are from internal sources to do with our own bodies, and so while the hazard function or force of mortality decreases until about age 8 – see Canada lifetables – it is monotonically increasing thereafter.

### Supplementary Exercise 5.1

1. Maximize  $L$  (or  $\log L$ ) with respect to  $\lambda$ .
2. You have (at least) 2 ways to calculate a confidence interval for  $\lambda$ : one is to use as the SE for  $\hat{\lambda}$  the square root of the reciprocal of the negative of the curvature of the log-likelihood function at  $\lambda = \hat{\lambda}$ ; the other is to estimate and work in the  $\log \lambda$  scale, and to then back-convert the CI to the  $\lambda$  scale. Either way, because `optimize` does not provide it, you will have to be a bit resourceful in calculating the relevant curvature.

Give an argument why working in the  $\log \lambda$  scale will give a more appropriate CI, and a counter-argument why – in this particular application – staying in the  $\lambda$  scale is quite acceptable.

Then settle the argument by doing both and comparing results.

3. What would happen to  $L$ , to the ease of estimation, and to  $\hat{\lambda}$ , if subjects were tested more frequently, e.g. every month, every week, every day? PhD students should try to give a more mathematical argument, based on how close  $L$  and the MLE based on the intervals in the study are to the corresponding ones one would get from the more-precisely time-bracketed sero-conversions.
4. Superimpose the smooth cumulative incidence [also called the ‘risk’ curve,  $CI(t)$ , derived from the exponential model for the ‘time to HIV infection’ (or, equivalently, the constant-over-time infection rate model) on the step-function curve in the article. If you were a co-author, which of the two curves would you would suggest be presented?

### Supplementary Exercise 5.2

Refer to the data, kindly supplied by the author, on the 78 Icelandic trios studied by Kong et al. The data, along with the original Nature article ‘Rate of de novo mutations and the importance of father’s age to disease risk’ <http://www.epi.mcgill.ca/hanley/bios601/FathersAgeMutations.pdf> can be found in the Resources link for C&H Ch05 [Rates: N-A estimate].

1. Assume that the *de novo* mutation rate ( $\lambda$ ) is independent of (constant over) a man’s age (life),

$$\text{Mutation Rate at age } a = \lambda, \forall a,$$

and that the mutations found in his children are all transmitted from him, and that none are inherited from the children's mother.

(Being careful to distinguish the  $a \in [0, A]$  from the  $A$  that represents the father's **Age when his child is conceived**) use the rate estimator you derived from the '2 data-points and a (Poisson) model' exercise earlier in the term to estimate the mutation rate ( $\lambda$ ) from the data on the 78 trios. *Note: this empirical rate ends up involving grade 6 arithmetic, using the 'sufficient' statistics, but be sure to specify the dimension of the fitted rate.*

2. Obtain the parameter estimate of this (assumed constant over one's age)  $\lambda$  from a 'canned' regression program that uses the individual-subject data. *Hint: the article describing the mathematical-statistics behind this 'ML estimate based on iteratively re-weighted least squares' was published by Nelder and Wedderburn in 1972. When you fit the model, you have a choice of doing so in the scale of interest ( $\lambda$ ) or in the (default)  $\log \lambda$  scale. It is of educational interest to fit this simple model in both scales, and to 'get ahead of the curve' for the **Math523** course.*
3. Derive ML estimators for the two parameters  $\lambda_0$  and  $\beta$  in the age-dependent mutation rate models:

$$\text{Mutation Rate at age } a = \lambda_0 + \beta \times a, \quad (\text{additive rate model})$$

and

$$\text{Mutation Rate at age } a = \lambda_0 \times \exp[\beta \times a], \quad (\text{multiplicative model}).$$

For the *additive* model, check that applying your estimator directly to the data (i.e., by coding the formulae in R) yields the same parameter estimates as you would get from a 'canned' regression routine.

For the *multiplicative* model, you may stop when you have written down the log-likelihood – i.e., unless you wish to, you don't have to carry out the actual fitting.

## 5.4 Cum. survival probability as fn. of rate parameter

We saw this in BIOS601 as  $S(T) = \exp[-\int_0^T h(t)dt]$ , or cumulative incidence as  $CI_{0 \rightarrow T} = 1 - S(T) = 1 - \exp[-\int_0^T h(t)dt]$ .

We also came up with a 'heuristic' ("a usually speculative formulation serving as a guide" in the investigation or solution of a problem") whereby the **integral**

$\int_0^T h(t)dt$  can be seen as the **expected number of events,  $\mu$ , if there was always one unit (person) at risk for the period 0 to  $T$** . Thus if an event (failure) occurred at any point in this interval, the failed unit is immediately replaced by another of the same profile: e.g., if  $h(t)$  referred to computers, we would replace a computer that failed at time  $t_1$  by another of the same age, and if this failed before  $T$ , at time  $t_2$  say, we would in turn replace it by another of age  $t_2$ , and so on until we got to  $T$ . So by the end, we would have observed the 1-unit system for a total of  $T$  units of time, and we might have observed 0, 1, 2, ... failures (and had to make this many replacements), in order to have the system in continuous operation for this duration. The expected number of failures in that period would be the integral of (the area under) the  $h(t)$  curve. We saw in first term that the Poisson distribution has the 'closed under addition' property; in this application, we can think of the total number of events in  $(0, T)$  as (the limit of) a sum of more and more Poisson random variables, representing the numbers of events in smaller and smaller intervals  $(t, t + dt)$ , with expected numbers of events  $h(t)dt$ . In the limit, this sum of small expectations is nothing more than the overall expected number of events,

$$\mu = \int_0^T h(t)dt$$

The observed sum is thus the realization of a *single Poisson random variable with mean  $\mu$* , and so the probability that the initial unit will '**survive**' the entire interval is just the probability that there will be **no event** in the entire period, i.e.,

$$S(T) = Pr(\text{Poisson.RV}[\mu] = 0) = \exp[-\mu] = \exp[-\text{integral of } h(t)].$$

The other concept that is reinforced by this heuristic, and the computer example, is that the computer-days are interchangeable. Imagine we had a large bank of computers all of the same vintage: we could imagine having a different one of these computers be the one that ran the system (was 'on duty') for the day, and we could even draw lots for which computer is the one on duty at any time. Assuming that the 'on duty' computer didn't age any faster than the ones that were 'off duty' that day, we can now see that the probability that a *specific* computer would fail before time  $T$  is the same as the probability that a *sequence of computer-days* – or *computer-hours*, or *computer-minutes* (each one contributed by a possibly different computer) would contain at least one failure. This *interchangeability* of (impersonal, indistinguishable, unnamed) units of the same age, i.e., with the same  $h(t)$ , is central to the concept of 'person-clicks' that C&H use.. it is not the particular person that matters to the contribution, but the person's *profile* – his/her  $h(t)$  value.

If the rate is a constant over the period  $(0, T)$ , so that the integral is  $\mu = \lambda \times T = \lambda T$ , then we get the simple expression for the (cumulative) survival probability given at the top of page 46, namely  $S(T) = \exp[-\lambda T]$ .

This section also discusses the simple approximation to  $\exp[-\mu]$  when  $\mu$  is small, namely  $1 - \mu$ . In this situation, the cumulative risk (in fact, the word *cumulative* is redundant!) can thus be approximated by

$$\text{Risk} = \text{Cumulative Incidence} \approx 1 - \mu = 1 - \lambda T \quad [\mu \text{ small}].$$

Whether or not the integral  $\mu$  is small, if  $\lambda$  is constant over  $(0, T)$ , then – apart from random variations –

$$\log\{S(t)\} = \log\{\exp[-\lambda t]\} = -\lambda t,$$

so that

the plot of  $-\log\{S(t)\}$  versus  $t$  should be linear in  $t$ , with slope  $\lambda$ .

## 5.5 Rates that vary with time

JH’s comments in section 5.4 discussed both piecewise-linear (and in the limit a) general smooth form(s) for  $h(t)$  or  $\lambda(t)$ , and so there is little to add for this section, other than to make one remark about their use of the term “*cumulative failure rate*.” JH finds this term too close to “cumulative incidence”, which is a proportion. C&H’s “cumulative failure rate” is in fact the integral we discussed above, and so has as its dimension or units the expected number of events in the period  $(0, T)$  if one unit were always operating, i.e., ‘at risk.’ He would prefer that you use the more common term “*integrated hazard*” often denoted by an *upper case* letter,

$$H(T) = \int_0^T h(t)dt \quad \text{or} \quad \Lambda(T) = \int_0^T \lambda(t)dt.$$

C&H tell us that “it follows that the relationship

$$\log[S(t)] = -\text{Cum. failure rate} \quad \{ \log[S(t)] = -H(t) \text{ in our notation} \}$$

still holds when the rate varies from one band to the next... and will be used to calculate  $S(t)$ .” We have already used the exponentiated version of this to calculate  $S(t)$ . But this relationship in the log scale is also used to check whether an assumed form or model for  $h(t)$  fits with the observed data: it is more difficult to judge fit on the  $S$  scale, where  $S(t)$  is likely to be quite

curvilinear, than on the  $H$  scale, where  $H(t)$  may have a simpler form, such as piecewise linear.

### Supplementary Exercise 5.3

1. For the Uganda HIV data, assume a different  $\lambda$  for each of the 3 intervals, and estimate each one separately. Do the data provide evidence against the assumption of a common  $\lambda$ ? Answer by maximizing  $L$  under the larger (3 possibly different  $\lambda$ s) and smaller (all three  $\lambda$ s are the same) models, and computing the likelihood ratio.
2. Even if you do not find evidence against a ‘constant-over-time-bands  $\lambda$ ’ model, nevertheless calculate and plot the (piecewise-smooth) cumulative incidence curve,  $CI(t)$ , derived from the ‘3- $\lambda$ ’ model, superimposing it on the  $CI(t)$  curve fitted under the simpler ‘1- $\lambda$ ’ model.

## 5.6 Rates varying continuously in time: Kaplan-Meier (K-M) and Nelson-Aalen (N-A) estimators

“The assumption that the rate parameter is constant over broad bands of time, but changes abruptly from one band to the next, is widely used, but an alternative model, useful when exact times of failure and censoring are known, **is to allow the rate parameter to vary from click to click.** In Chapter 4 this kind of model led to the Kaplan-Meier estimate of the survival curve; when using rates it leads to the estimate known as the Aalen-Nelson estimate.”

This is a very nice way of putting it. First, it says that the Kaplan-Meier curve is a limiting case of a probability-based lifetable, with the time bands made narrower and narrower. In the limit (and the Kaplan-Meier table is sometimes referred to as the ‘product-limit’ table) one need only be concerned with products of continuation probabilities from the event-containing intervals. It also explains why the Kaplan-Meier curve is called ‘non-parametric’: **by making the bands narrower and narrower, the curve follows the data exactly.**

The Kaplan-Meier estimate can be seen as a product of *empirical* continuation probabilities, each one governed by the *binomial* model. We formally acknowledge this when we use Greenwood’s formula for the SE of  $\widehat{S}(t)$ .

The Nelson-Aalen estimate can be seen as a product of *model-based* continuation probabilities, with each estimated probability calculated from the theoretical relation between the (in this case shortterm incidence or) hazard rate and cumulative incidence, viz.  $S_{t \rightarrow t+dt} = 1 - CI_{t \rightarrow t+dt} = \exp[-\int_t^{t+dt} h(u)du]$

If an interval  $t, t + dt$  involves  $n$  persons at risk, and  $d$  events (deaths), then the person time is  $ndt$  and so the estimate of the incidence is  $\frac{d}{n \times dt}$ . Each one governed by the *binomial* model. If  $d$  is zero, then the estimate of the incidence is zero. Thus, the empirical hazard function is a ‘square-wave’ function,

$$\widehat{h}(t) = \begin{cases} 0 & \text{if } (t, t + dt) \text{ contains } d = 0 \text{ events,} \\ \frac{d}{n \times dt} & \text{if } (t, t + dt) \text{ contains } d > 0 \text{ events.} \end{cases}$$

Thus,

$$\widehat{h}(t)dt = \begin{cases} 0 & \text{if } (t, t + dt) \text{ contains } d = 0 \text{ events,} \\ \frac{d}{n} & \text{if } (t, t + dt) \text{ contains } d > 0 \text{ events.} \end{cases}$$

Thus

$$\int_0^T \widehat{h}(t)dt = \sum \frac{d}{n},$$

with the summation over those **event-containing narrow bands** where  $t < T$ . **The persons at risk in these event-containing bands are called *risksets*.**

The EPIB634 site has R code that divides the JUPITER follow-up time into 1-year, then 1-month, then 1-week, then 1-day bands. The resulting  $h(t)$  function becomes more and more erratic, but in doing so – just like the K-M curve – it conforms exactly to the data.

Just as the K-M curve is based on a product of *binomial*-based probability estimates, the N-A curve can be seen as an integral (the limit of a sum) of *Poisson*-based rate (hazard) estimates: provided that each  $n$  is large, the ‘ $d$ ’ that forms the numerator of the empirical elemental area can be seen as a realization of a Poisson random variable. Its estimated variance can therefore be estimated as  $d$ , and the variance of  $\frac{d}{n}$  as  $\frac{d}{n^2}$ . Thus,

$$\widehat{Var} \left[ \int_0^T \widehat{h}(t)dt \right] = \sum \frac{d}{n^2}.$$

For the numerators in this variance expression, some textbooks use binomial-based variances of  $n \times \frac{d}{n} \times \frac{n-d}{n}$  instead of the Poisson-based variances of  $d$ . If each  $n - d$  is large, as it is in the JUPITER study, then the difference between the two formulations is miniscule.

Most software packages plot the N-A curve as a step-function, just as they do the K-M curve. The conf. intervals are first calculated for the estimated integral, and then for  $\widehat{S}(t)$ .

## Supplementary Exercise 5.4

1. Calculate the Nelson-Aalen and Kaplan-Meier curves, and the SE’s, for the each arm of the JUPITER trial.

## 5.7 ‘Lifetime’ (and Portion-of-Lifetime) Risks

### Supplementary Exercise 5.5

A bios601 seminar a few years ago addressed the risk of appendicitis in twins. It drew on the self-reported (in a 1980 survey) experience of Australian twins. The original paper can be found at <http://www.ncbi.nlm.nih.gov/pmc/articles/PMC1683858/> and the data and documentation at <http://genepi.qimr.edu.au/staff/davidD/Appendix/>.

1. Using the supplied R code, or otherwise, and using the appendectomy data from all respondents, calculate the age-specific hazard rates, i.e., the incidence density as a function of age. Use all respondents.
2. What is (i) the average age ( $\bar{a}$ ) of the respondents at the time of the survey? (ii) the average (and IQR) age and calendar year at/in which the appendectomies were performed? Using the age-specific (hazard) rates to calculate the cumulative incidence of appendectomy to ages 25, 30, 35 and 40, and to age  $\bar{a}$ . Compute the observed overall proportion in the dataset who have had an appendectomy, and comment on how well it agrees with the 5 fitted values.
3. Repeat the cumulative incidence estimation in 2., but with a suitably smoothed hazard function.
4. Repeat the cumulative incidence estimation in 2., but using the Kaplan-Meier estimator.
5. Refer to the Norwegian article “Incidence of Acute Nonperforated and Perforated Appendicitis: Age-specific and Sex-specific Analysis” by Körner et al. in World J. Surg. 21, 313-317, 1997. Use the data in Table 1 to calculate the (sex-specific) cumulative incidence of laparotomy for suspected appendicitis to ages 25, 30, 35 and 40. State any assumptions you make. Compare the estimates with the ones based on the Australian data.
6. Quickly examine the articles, provided under Resources, from other places and times – and in some instances using slightly different ‘events’. Make



a few quick back-of-the-envelope calculations of the risks (lifetime, and to ages 25, 30, 35 and 40) they imply. Then comment on where the Australian-derived estimates fit in relation to all of the other estimates, and whether the discrepancy can easily be explained in terms of differences in ‘event-definition’ or different ‘persons, or places or times’.

### Supplementary Exercise 5.6

The following questions were prompted by the October 17, 2015 50th reunion of JH’s high school class. Approximately 90 of us entered secondary school at age 13 in 1960 and completed our secondary education in 1965.

Part of the reunion was a Mass, and a tree-planting ceremony to remember the 13 members of the class who had died.

Before attending, JH had wondered if 13 was unusually low or high, and so he consulted the relevant lifetables for Irish males.<sup>7</sup> JH recognized of course that those of us whose parents were well enough off to send us to that boarding school were already above the average Irish standard of living, and that we ourselves were subsequently privileged. Only about 1/3 or so of our Irish birth-cohorts (most classmates were born in 1947, but we had some a year older or a year younger than us) got a secondary school education. And during our lifetimes, we all much higher-earning jobs than the ‘average’ Irish male.<sup>8</sup>

During his sermon at the reunion Mass, (now-retired) Archbishop Clifford spoke about our cohort, and his experiences as the Dean of Discipline. He also spoke about what happens when one retires, and what we have to look forward to. From other things he said he must have been born in 1939 or 1940 – he was 65 in 2004, but retired just a few years ago. He told us that back at a reunion in 2004, he too had been wondering about what lies ahead (interestingly he did not mention how many of his class were already dead by that time). I leave you read the rest of what he said:

[Oct 2015] I am seven years older than you, as I said earlier. When I was 65 my class were celebrating 40 years of Priesthood and I was asked to address them. I rang the Central Statistics Office to enquire what the **prospects were on average for men of 65**

<sup>7</sup>The lifetables from 1950 to 2009 can be found at the bottom of the Resources for ‘C&H Ch05 [Rates: N-A estimate]’

<sup>8</sup>At the reunion, I stressed to some of my classmates that many averages are ‘stupid averages’: I told them the joke about having one arm in the refrigerator and one arm in the oven, and ‘on average’ being OK. I also told them the version a urology resident told in my EPID607 class in one summer school: the ‘average’ person has 1 ovary and 1 testicle!

**in 2004.** Unknown to me, the CSO was now in Cork and a very good humoured lady answered me. “You are looking for your life expectancy, Archbishop. I will look up the table for you. You have **13.35** years to go”. There was a long pause and she guessed that I was doing the arithmetic. “That will bring you to April 2018. But, cheer up, it might not be that long at all!”

I rang them again the other day [2015] and another good lady told me that people aged **68 years have 14.5 years of life expectancy**. I often noticed as I supervised study that your class spent almost half their study time on Honours Maths, so I am sure one or two of you went on to become statisticians! By the way, **I am down to single figures myself at 9.1**. Who knows? Man proposes, God disposes. And we must not forget Churchill’s remark that there were three kinds of lies, lies, damn lies and statistics.

1. Using the 1950-2009 lifetable information, try to verify the answer Archbishop Clifford got when he enquired what the prospects were on average for men of 65 in 2004. You may not find the 13.35 years where you expected it. Why is this? When the number he was looking for did get to be calculated, why was it higher than 13.35?
2. When he called again in 2015, in which rows did the ‘good lady’ get the number 14.5 years for men aged 68 in 2015, and the 9.1 years for himself?
3. If we subtract the ensuing 11 (2015-2014) years between the two enquiries from the 13.3 years, we only get 2.35 years. Give three reasons why 11.35 - 11 << 9.1.
4. The lifetable data only go to 2009, and so – unless men were born on or before 1941 – they cannot be used to project 18 year old men all the way for the full 50 years to age 68. For JH’s class, born in 1947, they can be used to take them to age 62 in 2009.

Use the lifetable information to calculate, *separately for each of the birth cohorts from 1941 to 1947*, how many, out of say 90 Irish men who reached 18, would still be alive 50 years later, and how many would have already died before their 50th reunion. Note that for JH’s cohort, unless you extrapolate, you will only be able to follow them to their 44th reunion i.e., to age 62. So, state any assumptions you make in getting the calculation up to the 50th, i.e, to age 68. Remember that the information you have is from *current* (i.e., *period*, i.e., *cross-sectional*) death rates. Also, a Lexis diagram can help with the orientation.

5. What percentage of Archbishop Clifford's class would you estimate to have already died by now [2015]? Assume it that he was born in 1939.

### Supplementary Exercise 5.7

Here is an email query JH received. It concerns his 2003 article, with 3 graduate students, [How long did their hearts go on: A Titanic Study](#) in the Christmas Edition of the British Medical Journal<sup>9</sup>

Dear Dr. Hanley

I enjoyed your 2003 article in BMJ on age of death of Titanic survivors. However, I'm a little perplexed by your survival curves. If the overall average age of Titanic survivors was about 28 in 1912, as in your graph, then the average age of death of half of that population in 1952 was about 68, and 25% were still alive in 1972, when they were 88.

This also means 25% of the adult population in the US and Sweden born in 1884 was still alive at 88 years of age in 1972.

Are my calculations correct? This seems to put the age of death too high for a population born in the 19th century.

Regards,

\_\_\_\_\_, Ph.D.

Professor,

Departments of Psychology and Molecular Pharmacology and Physiology

1. Answer the professor.
2. Use his query to create a small exercise with a few very specific questions that would help high school students to understand the issues brought up by this letter. Provide model answers.

<sup>9</sup>The articles in this edition are meant to be entertaining and whimsical, but still based on real properly-collected data, analyzed correctly. This [site](#) has links to the ones from 1995 to 2003. JH's favourite article is the 2001 [Effects of remote, retroactive intercessory prayer](#) on outcomes in patients with bloodstream infection: randomised controlled trial. It generated a very large volume of correspondence. Another is [Death Rates of Characters in Soap Operas on British Television](#) in 1997. A more recent one (2014, next column) addressed how far along in the movie sad events occur to Disney characters.

<http://www.bmj.com/content/349/bmj.g7184>

**CARTOONS KILL:** casualties in animated recreational theater in an objective observational new study of kids' introduction to loss of life. BMJ'14.

[From Department of Epidemiology and Community Medicine, University of Ottawa; School of Public Health, University of Alberta, Edmonton; Division of Community Health and Humanities, Memorial University, St John's, NFLD, Division of Psychiatry, University College London, London, UK]

#### Abstract

**Objectives** To assess the risk of on-screen death of important characters in children's animated films versus dramatic films for adults.

**Design** Kaplan-Meier survival analysis with Cox regression comparing time to first on-screen death.

**Setting** Authors' television screens, with and without popcorn.

**Participants** Important characters in 45 top grossing children's animated films and a comparison group of 90 top grossing dramatic films for adults.

**Main outcome measures** Time to first on-screen death.

**Results** Important characters in children's animated films were at an increased risk of death compared with characters in dramatic films for adults (hazard ratio 2.52, 95% confidence interval 1.30 to 4.90). Risk of on-screen murder of important characters was higher in children's animated films than in comparison films (2.78, 1.02 to 7.58).

**Conclusions** Rather than being the innocuous form of entertainment they are assumed to be, children's animated films are rife with on-screen death and murder.

#### Introduction

Recent research suggests that as visual media has become more pervasive in modern society, children's enculturation is increasingly likely to come from television and movies, including their understanding of death. By the age of 10, most children have developed a complete understanding of death as irreversible, permanent, and inevitable. Before this age, however, many children may have only a partial understanding of death as they lack the cognitive maturity to comprehend this concept. Exposure to on-screen death and violence can be frightening to young children and can have intense and longlasting effects.<sup>5</sup> This might be particularly problematic when children have not been prepared, through candid discussion with parents or caring adults, to face these themes. [ ... ]

#### Methods

##### Animated films

The primary exposure group for this study consisted of the 45 children's animated films with the highest all-time box office gross revenue, indexed for inflation. Films were included if they received a genre tag of "animation" by the Internet Movie Database and received a film rating of "G-general audience" or "PG-parental guidance suggested." We excluded films



in which the main characters were neither humans nor animals (for example, cars, robots, toys), as the concept of mortality among inanimate yet anthropomorphized characters is unclear. Sequels were also excluded because important characters might have already died in a previous film. Film release dates ranged from 1937 (Snow White) to 2013 (Frozen).

Comparison films

The comparison films consisted of the two highest box office grossing films in the same year of release as each animated film, excluding sequels, that received a genre tag of “drama” by the Internet Movie Database. We reasoned that these films were more likely to be viewed solely by adult audiences. In cases in which more than one animated film for a given release year was included, we also selected the next two top grossing dramatic films of that year (for instance, third and fourth) for comparison. We excluded films that were additionally tagged with “action” or “adventure” because they are often also marketed to, and viewed by, young children. The comparison group nevertheless included a range of subgenres, including horror (for example, The Exorcism of Emily Rose, What Lies Beneath) and thriller (for example, Pulp Fiction, The Departed, Black Swan). A complete list of animated films and their comparisons is in the appendix. [...]

Outcomes measured

Our primary outcome was the elapsed time of the film at which the first on-screen death of an important character occurred. An important character was defined as a main character, a friend or family member of a main character, or the main villain or nemesis in the film. As secondary outcomes, observers also noted two contextual factors as these could be particularly traumatic for children: instances in which the first on-screen death was a murder (excluding death in wartime combat); and, instances when the first on-screen death was of a parent of a main character. In four cases (two animated and two comparison films), a non-permanent death was noted (that is, the character was later revived). We included these as outcome events as witnessing such deaths on screen might be traumatic to young children, irrespective of whether or not they are later reversed. Nevertheless, removal of these cases as death did not change the pattern of results nor their significance. Trained research assistants collected data collection using a standardized coding protocol. A panel of experienced (amateur) film critics (IC, MK, MW) resolved ambiguous or unclear events by consensus.

Statistical analysis

We used Cox regression to examine the effect of type of film (animated versus comparison) on time elapsed at first on-screen death. To account for the fact that children’s films are often shorter than films for adults, we included total runtime as a covariate. Survival curves presented are based on these Cox regressions, adjusted for total runtime. The proportional hazards assumption was tested with the procedure developed by Therneau and Grambsch (test of non-zero slope of Schoenfeld residuals), and the assumption held ( $\text{ChiSq} = 0.71$ ,  $P = 0.40$ ). Finally, we included years since release and the interaction between film type and years since release as covariates to investigate whether films are becoming more or less deadly over time. Data analysis was carried out with SPSS 21.0.15

Fig 1 .. animated vs. comparison films.

Fig 2 .. animated vs. comparison films for death by murder.

Fig 3 .. parents of protagonists. animated vs. comparison films.

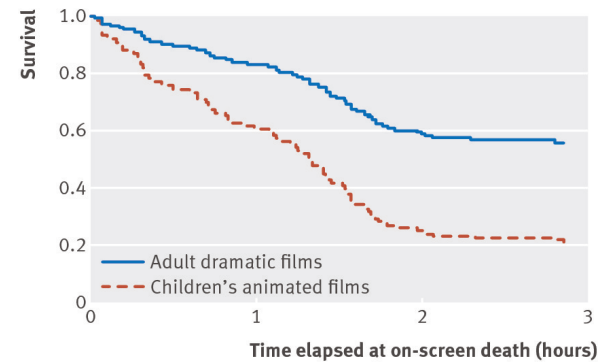


Fig 1 Survival curves for important characters in animat

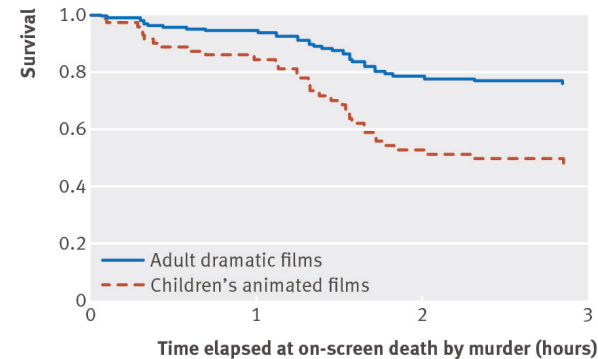


Fig 2 Survival curves for important characters in animat

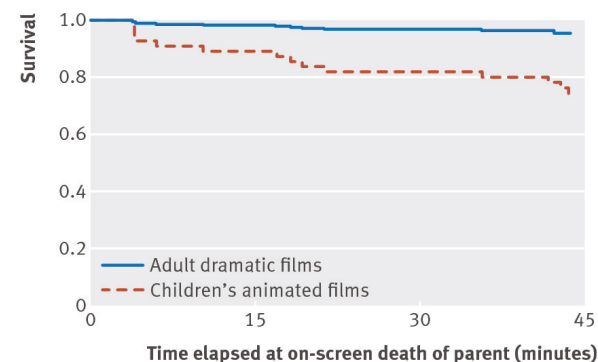


Fig 3 Survival curves for parents of protagonists in anim