

Hepatitis C : Projections

Estimates From Federal Report...

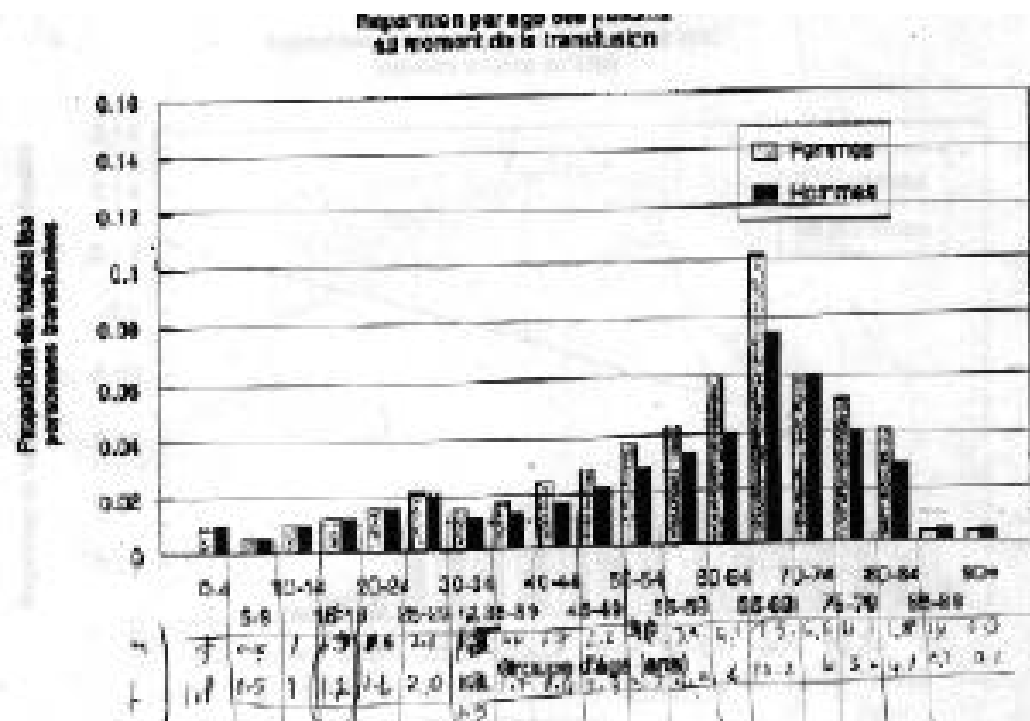
infected Estimated number infected (Québec)
e_vivant Estimated number of these still alive in 1998
fx_incl Fraction to be covered by Québec
(not covered by federal compensation plan)

year	infected	e_vivant	fx_incl	year	infected	e_vivant	fx_incl
1960	368.5	52.2	1	1980	729.7	237.3	1
1961	390.3	57.2	1	1981	775.9	262.2	1
1962	427.5	65.2	1	1982	821.6	287.3	1
1963	450.4	71.4	1	1983	851.4	308.4	1
1964	476.4	77.8	1	1984	858.7	321.6	1
1965	482.2	82.2	1	1985	791.8	306.4	1
1966	504.0	88.8	1	1986	686.4	274.4	0.0
1967	528.4	97.1	1	1987	592.0	244.1	0.0
1968	557.2	106.7	1	1988	522.3	222.0	0.0
1969	558.3	111.1	1	1989	464.6	204.1	0.0
1970	547.6	131.2	1	1990	209.9	97.7	0.38
1971	590.2	126.5	1	1991	48.5	24.3	1
1972	640.9	143.1	1	1992	11.5	6.2	1
1973	681.0	158.2	1				
1974	656.2	158.3	1				
1975	685.8	171.6	1				
1976	693.3	195.1	1				
1977	662.0	193.3	1				
1978	706.5	213.9	1				
1979	713.6	224.0	1				

Hepatitis C : Projections

Estimated Age Distribution of Transfusion Recipients

m	f	agefrom	ageto
1.0	1.1	0	5
0.5	0.5	5	10
1.0	1.0	10	15
1.3	1.2	15	20
1.6	1.6	20	25
2.1	2.0	25	30
1.2	1.5	30	35
1.4	1.7	35	40
1.7	2.4	40	45
2.2	2.9	45	50
3.0	3.7	50	55
3.4	4.2	55	60
4.1	4.6	60	65
7.5	10.2	65	70
6.1	6.0	70	75
4.1	5.2	75	80
2.8	4.1	80	85
0.7	0.4	85	100



Hepatitis C : Projections

Deaths, Québec 1980

AgeGroup	Popl'n		No. Deaths			Popl'n		No. Deaths		
			All-Causes	PrCa	LungCa			All-Causes	LungCa	BreastCa
0 1	50801		533	0	0	47200		407	0	1
1 5	194853		126	0	0	182482		78	0	0
5 10	229852		99	0	0	217364		70	0	0
10 15	261926		104	0	0	246081		59	0	1
15 20	331637		414	0	0	316899		148	0	0
20 25	331308		557	0	0	325058		175	0	1
25 30	304631		408	0	2	302086		164	1	1
30 35	283425		400	0	6	272842		164	1	10
35 40	229178		434	0	9	226076		216	10	25
40 45	180410		516	0	30	180775		294	17	42
45 50	175804		919	3	82	176946		468	30	55
50 55	166299		1482	5	188	173797		741	47	98
55 60	147813		2032	13	282	161945		1080	51	145
60 65	114024		2589	28	356	131702		1345	78	120
65 70	88102		3323	66	422	106096		1857	57	117
70 75	65487		3429	76	321	85995		2312	79	103
75 80	43074		3135	105	206	65063		2676	50	95
80 85	20887		2406	97	103	37787		2604	31	62
85 100	12415		2307	91	56	25092		3444	15	58

Hepatitis C : Projections

1-Year Transition Probabilities (%)

Current State	Next State										
	0	1	2	3	4	5	6	7	8	9	10
0 resolved											
1 chr_mild	95.9	4.1									
2 chr_mod		92.6	7.3						0.1		
3 cirrhosis			94.5	2.5		1.1	0.4	1.5			
4 ascites				79.2	6.7				3.1	11.0	
5 ascitesR					63.9				3.1	33.0	
6 variceal						76.9			3.1	20.0	
7 hepEncph							46.9		3.1	50.0	
8 hcc								14.0		86.0	
9 liver_tp									90.0	10.0	
10 dead											100.0

